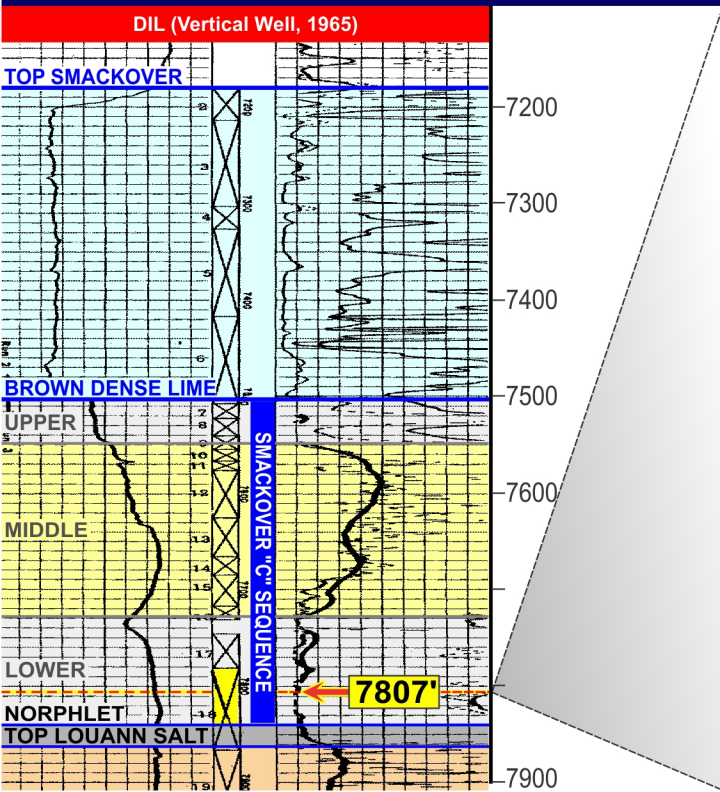


# HUMBLE OIL & REFINING #12 J.P. McKean, BUCKNER FIELD, COLUMBIA COUNTY, ARKANSAS



## LAMINATED BASAL BDL FACIES (CORE DEPTH 7,807')



PHOTO COURTESY EZAT HEYDARI

HIGHER TOC LAMINAE ARE LIGHTER COLORED IN LAMINATED BASAL BDL FACIES\*

GRAY LAYERS HIGHER TOC, SILICICLASTIC-RICH ANOXC CARBONATE DEPOSITS

BLACK LAYERS LOWER TOC, "CLEAN" ANOXC CARBONATE DEPOSITS

\* Heydari, Wade & Anderson (1997)

**Humble Oil & Refg.  
#12 J.P. McKean**  
Buckner Field  
Cored BDL March 1965

### Core Description - Basal BDL

LIMESTONE AND DOLOMITIC LIMESTONE-MEDIUM LIGHT GRAY TO DARK GRAY, CORE HAS BANDED APPEARANCE DUE TO LIGHTER STRINGERS (1" TO 2-1/2" THICK) OF LITHIC DOLOMITIC LIMESTONE WITH CONCHOIDAL FRACTURE.