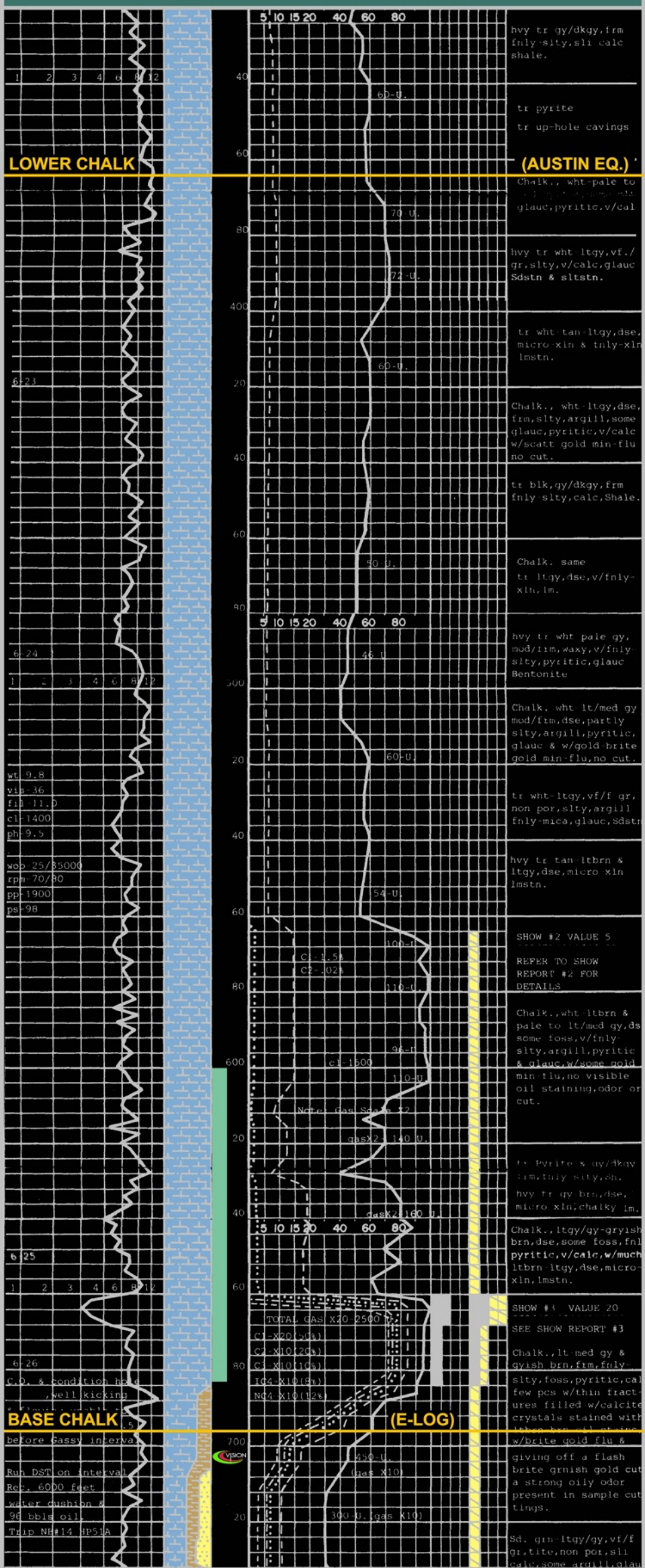


MUDLOG EXAMPLE

OIL & GAS PRODUCTIVE

FRACTURED LOWER CHALK

SOUTHWEST MISSISSIPPI



Open Hole DST
(Interval Covered By Green Rectangle In Depth Track)
FARO: 1136 BOPD, No Water
FFP 3869 psi; BHP 6157 psi