

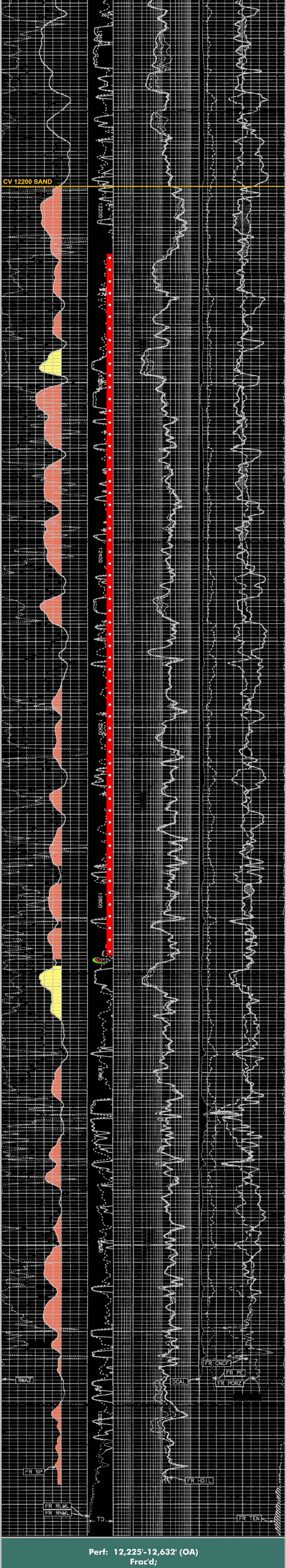
EXAMPLE - RECENT COTTON VALLEY COMPLETION

EOG

#1 Ramsey-Williams 9-7

MECHANICSBURG FIELD

Section 9, T9N-R3W; Yazoo County, Mississippi



Perf: 12,225'-12,632' (OA)

Frac'd;

IPF: 10,439,000 MCFGPD + 212 BCPD

FTP 2870 psi, 23/64" Ck, 59.5° Gr

Turned To Sales 7-2009

CUMULATIVE PRODUCTION (As of 9-2009):

373,323 MCF + 12,215 BO + 9,425 BW