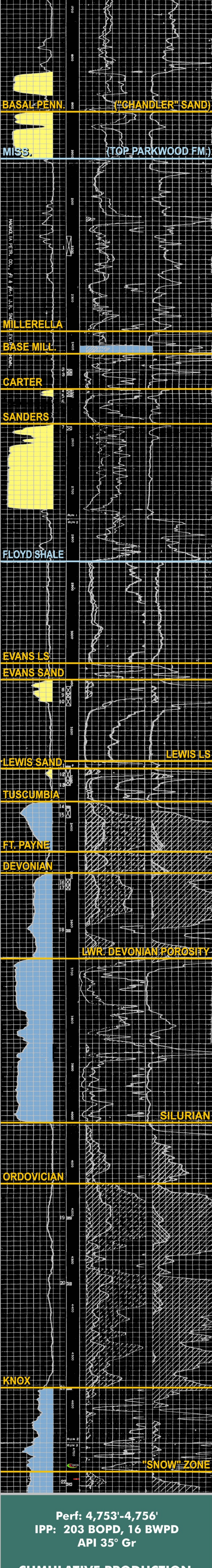


TYPE LOG - MISSISSIPPIAN BLACK WARRIOR BASIN (MISSISSIPPI)

Magnolia #A-1 Snow DISCOVERY - KNOX

("Snow" Zone - 1953)

Section 27, T13S-R7E; Monroe County, Mississippi



Perf: 4,753'-4,756'

IPP: 203 BOPD, 16 BWPD

API 35° Gr

CUMULATIVE PRODUCTION:

7,843 BO

(FIRST OIL PRODUCTION FROM ORDOVICIAN IN BWB)