

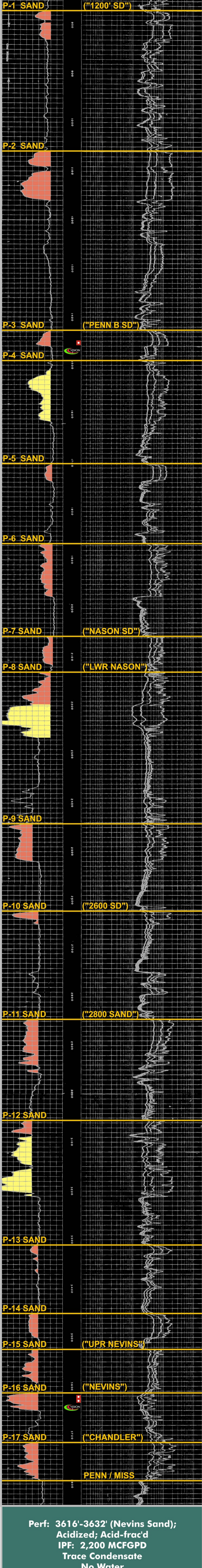
TYPE LOG - PENNSYLVANIAN BLACK WARRIOR BASIN (MISSISSIPPI)

Ladner & Stewart #1 Nevins

DISCOVERY - McKINLEY CREEK FIELD

("Nevins" & "Lewis" Sands - 1973)

Section 20, T15S-R18W; Monroe County, Mississippi



Perf: 3616'-3632' (Nevins Sand);
Acidized; Acid-frac'd
IPF: 2,200 MCFGPD
Trace Condensate
No Water
22/64" Choke, FTP 650 psi
Dually Completed With Lewis Sand;
Produced From April 1975
Through November 1975
Cumulative Production:
40,389 MCF, No Water
Production History Suggests
Mechanical Failure
Plugged Back And Recompleted
In The P-3 Sand April, 1990;
Perf: 1,449'-1,459'
FARO 300 MCFGPD

**CUMULATIVE PRODUCTION (P-3):
910 MMCF**