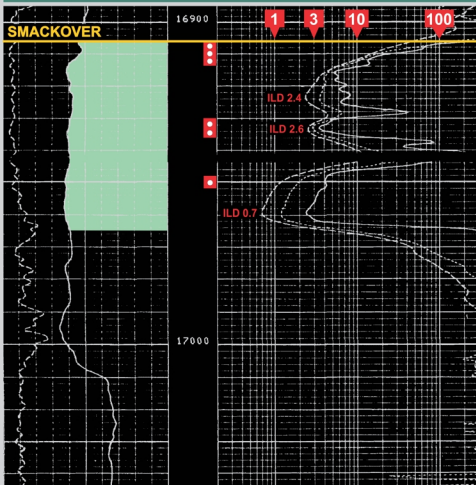


# Superior #3 Annie Hill MOVICO FIELD

Section 39, T1N-R1E; Mobile County, Alabama



Perf: 16,906'-16,914'

16,930'-16,936'

16,948'-16,952'

IPF: 83 BOPD, 1523 MCFGPD

FTP 1405 psi, 22/64" Ck, 43.7° Gr

Second full month of production (12-1983):

FARO 2348 BOPD, 207 BWPD

**CUMULATIVE PRODUCTION:**

**1,705,184 BO + 1,994,005 MCF + 1,339,392 BW**