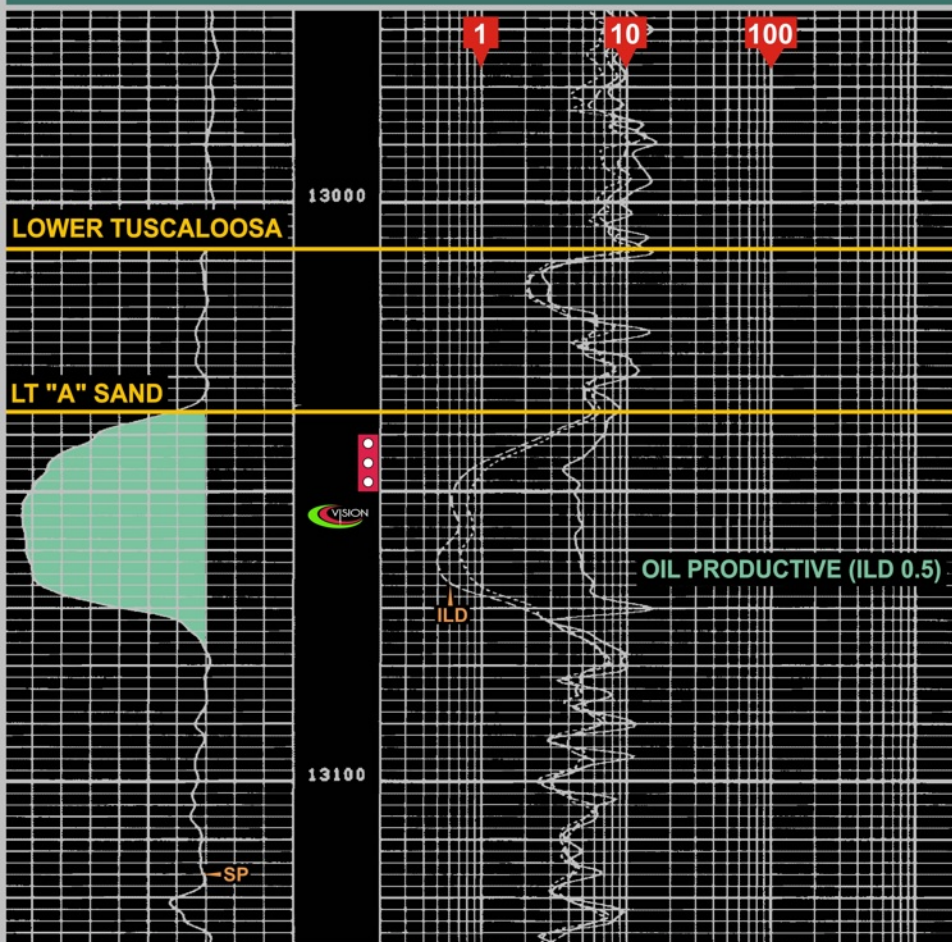


Duckworth #1 Bryan Meyer MILLBROOK FIELD

Section 51, T2N-R4W; Wilkinson County, Mississippi



Perf: 13,040' - 13,050'

IPF: 680 BOPD + 3800 MCFGPD + NO WATER
FTP 3500 psi

CUMULATIVE PRODUCTION:
246,731 BO + 987,037 MCF

(WATER PRODUCTION NOT SHOWN)