

MONCRIEF FIELD
MONCRIEF #1 TURNER



MORGANZA FIELD
AMOCO #1 HESS



MOORE-SAMS FIELD
AMOCO #1 BUTLER



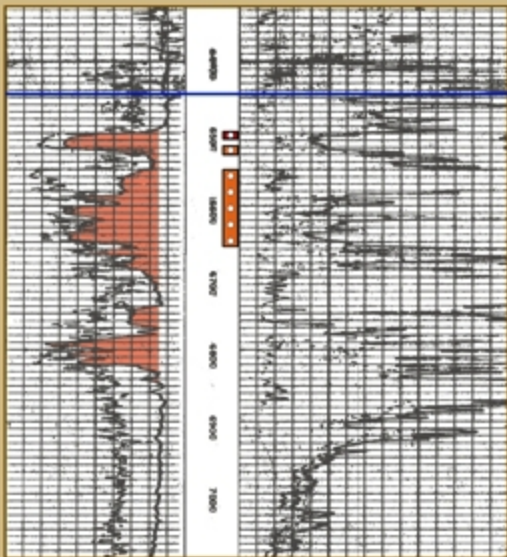
PORT HUDSON FIELD
AMOCO #6 PENNINGTON



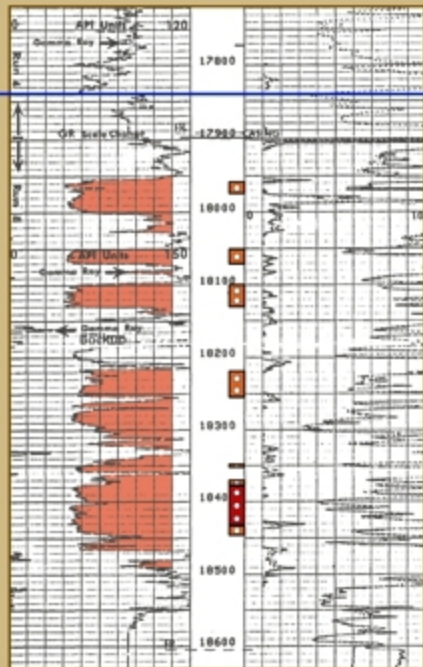
IRENE FIELD
SLAPCO #1 KIZER



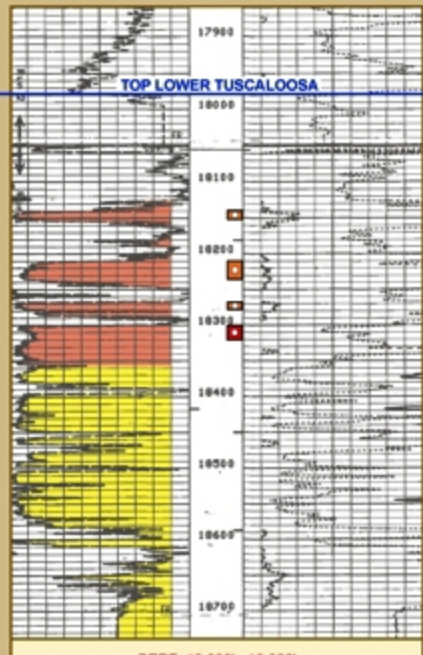
LOCKHART CROSSING FIELD
AMOCO #1 TUSC RA SUB



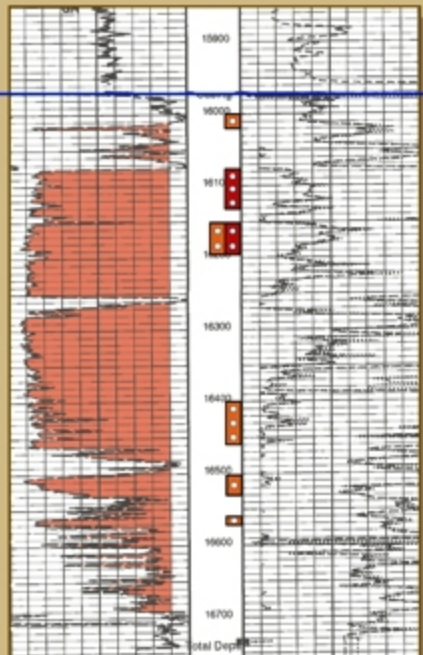
PERF: 16,498' - 16,508'
IPF: 10,000 MCFGPD + 70 BCPD + 10 BWPD
FTP 3,300 PSI, SITP 4,400 PSI; 20/64" CHOKE
LATER ADDED PERFS:
16,518' - 16,657' (OA)
CUMULATIVE PRODUCTION AS OF 9/2003:
24.5 BCF + 239 MBC



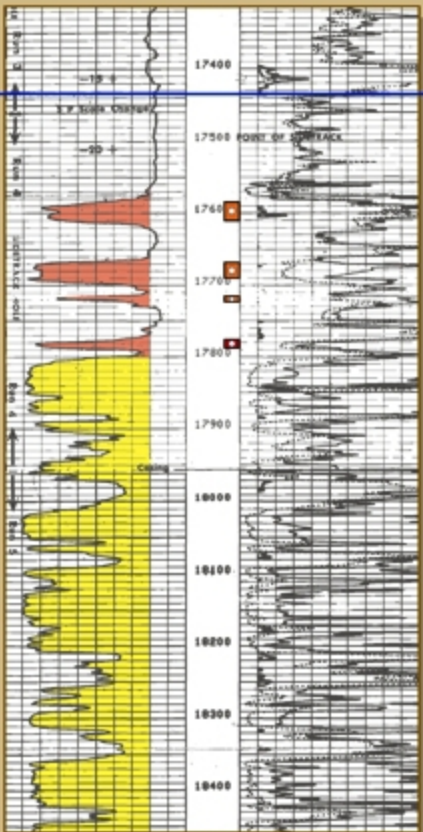
PERF: 18,378' - 18,433'
IPF: 12,610 MCFGPD + 102 BCPD + 46 BWPD
FTP 5,500 PSI; 24/64" CHOKE
LATER ADDED PERFS:
18,370' - 18,377'; 18,348' - 18,352'; 18,218' - 18,254';
18,100' - 18,130'; 18,050' - 18,070'; 18,434' - 18,447'
17,958' - 17,974'
CUMULATIVE PRODUCTION AS OF 9/2003:
46.6 BCF + 400 MBC



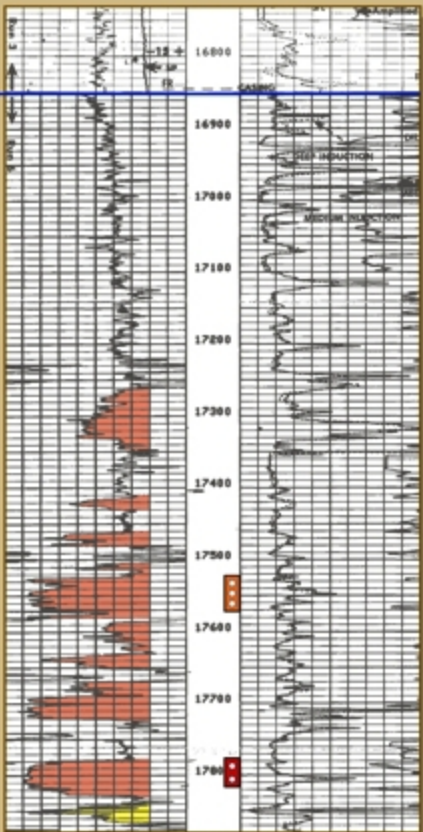
PERF: 18,300' - 18,320'
IPF: 11,600 MCFGPD + 320 BCPD + 44 BWPD
FTP 5,200 PSI; 48/64" CHOKE
LATER ADDED PERFS:
18,268' - 18,278'; 18,210' - 18,236'; 18,140' - 18,152'
CUMULATIVE PRODUCTION AS OF 9/2003:
30 BCF + 808 MBC



PERF: 16,078' - 16,132'; 16,152' - 16,196'
IPF: 4,870 MCFGPD + 522 BCPD + 158 BWPD
FTP 4,443 PSI; 8/64" CHOKE
LATER ADDED PERFS:
16,000' - 16,020'; 16,152' - 16,196'; 16,400' - 16,460'
16,502' - 16,530'; 16,560' - 16,572'
CUMULATIVE PRODUCTION AS OF 9/2003:
NA (PART OF PORT HUDSON UNIT)



PERF: 17,776' - 17,788'
IPF: 10,700 MCFGPD + 234 BCPD + 52 BWPD
FTP 6,500 PSI; 16/64" CHOKE
LATER ADDED PERFS:
17,714' - 17,722'; 17,668' - 17,690'; 17,584' - 17,610'
CUMULATIVE PRODUCTION AS OF 9/2003:
82 BCF + 1,713 MBC



PERF: 17,776' - 17,816'
IPF: 14,100 MCFGPD + 732 BCPD + 45 BWPD
FTP 8,300 PSI; 24/64" CHOKE
LATER ADDED PERFS:
17,522' - 17,572'
CUMULATIVE PRODUCTION AS OF 9/2003:
32 BCF + 1,331 MBC

THE LOWER TUSCALOOSA FIELDS DEPICTED ON THIS REGIONAL MAP HAVE PRODUCED IN EXCESS OF 3.6 TCF AND 176 MMBC.