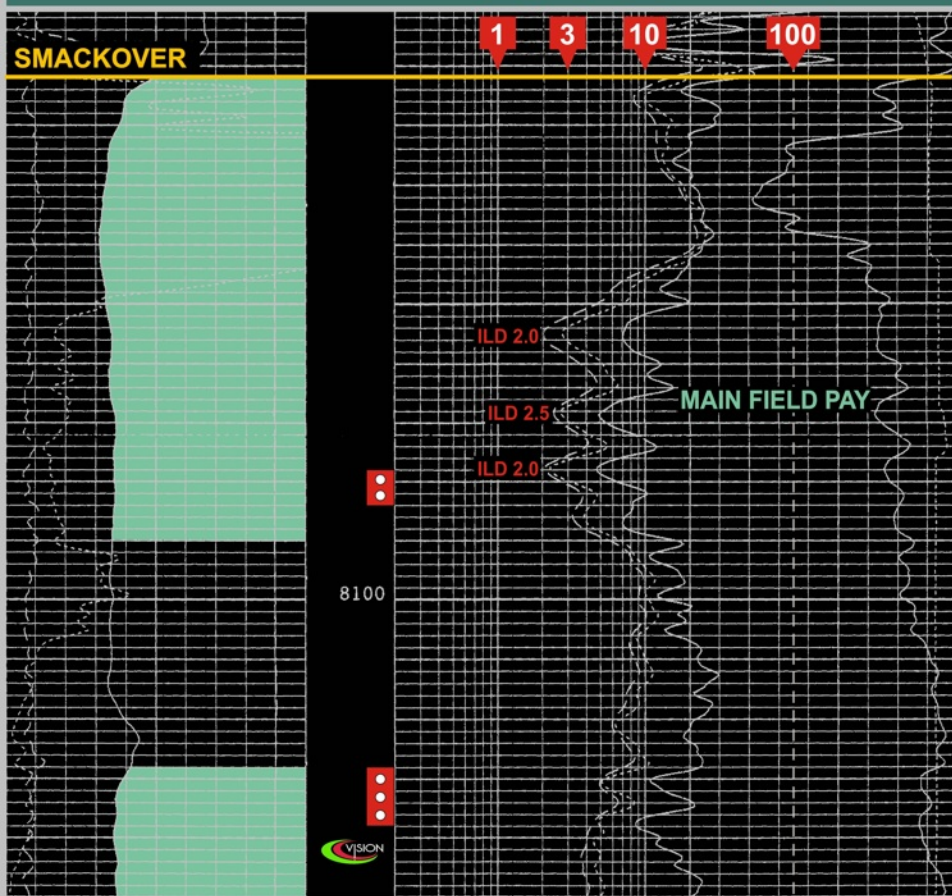


# Petrochem

## #1 Alexander (GSLU 34-1)

### DISCOVERY WELL - GRAYSON FIELD

Section 34, T16S-R21W; Columbia County, Arkansas



Perf: 8128'-8138'

IPF: 300 BOPD (Field allowable)

Produced 91,572 BO before watering out;

Plugged back; Perf: 8078'-8084'

IPF: 300 BOPD (Field allowable)

**CUMULATIVE PRODUCTION (As of July 2005):**

1,229,277 BO (Upper Zone)

1,320,849 BO (Both reservoirs)