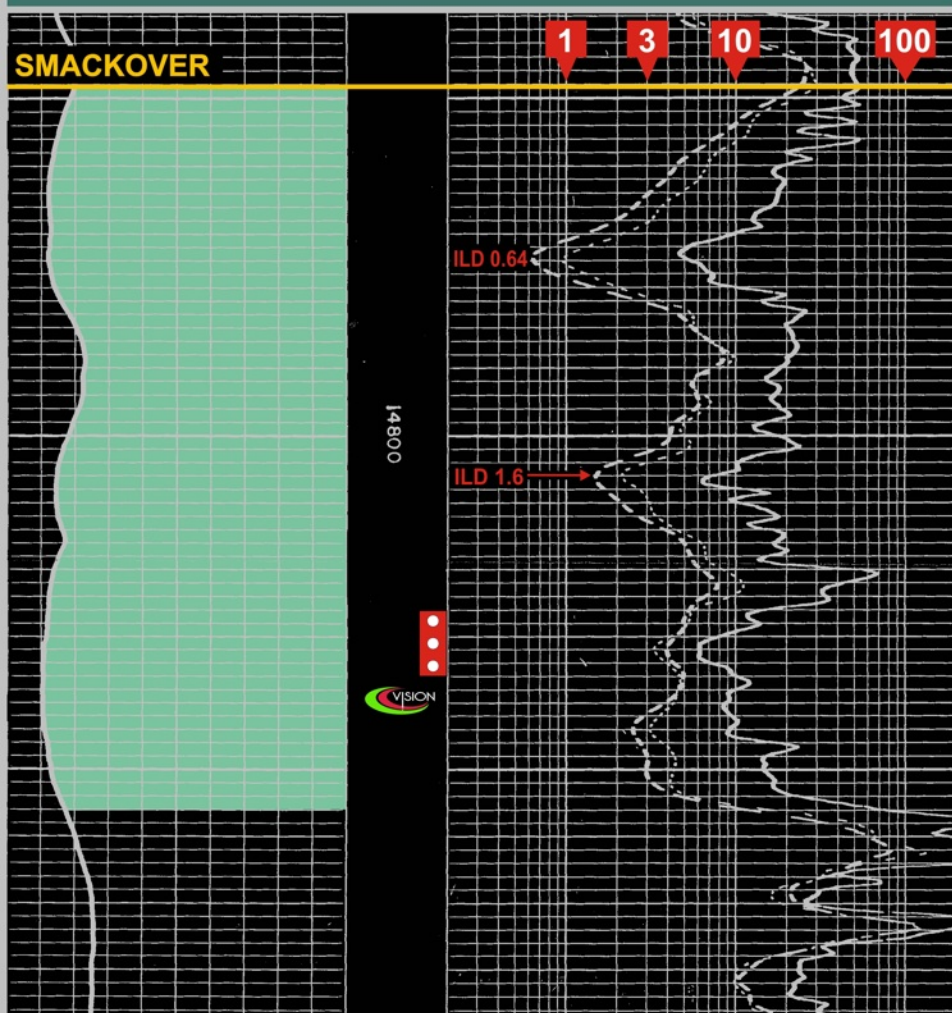


Conoco #1 Henderson 17-8

EAST BARBER CREEK FIELD

Section 17, T5N-R8E; Scott County, Mississippi



Perf: 14,826'-14,836'

IPF: 253 BOPD

FTP 250 psi, 33/64" Ck, 44.5° Gr

CUMULATIVE PRODUCTION:

662,833 BO + 318,274 MCF + 358,489 BW