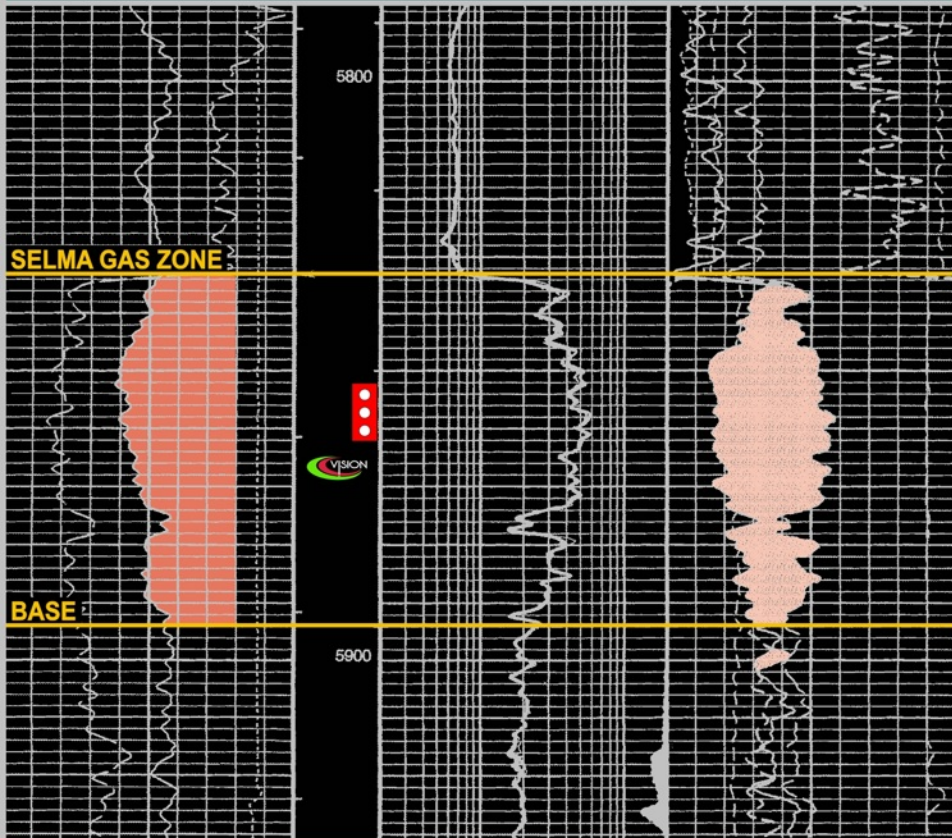


TYPE LOG - SELMA GAS ZONE

Penn Virginia #7 Aust 8-16

MAXIE FIELD
(Completed 2003)

Section 8, T1S-R12W; Forrest County, Mississippi



Perf: 5,852'-5,872'

IPF: 480 MCFPD

FTP 1660 psi, 8/64" Ck

CUMULATIVE PRODUCTION (As of 9-2009):
164 MMCF