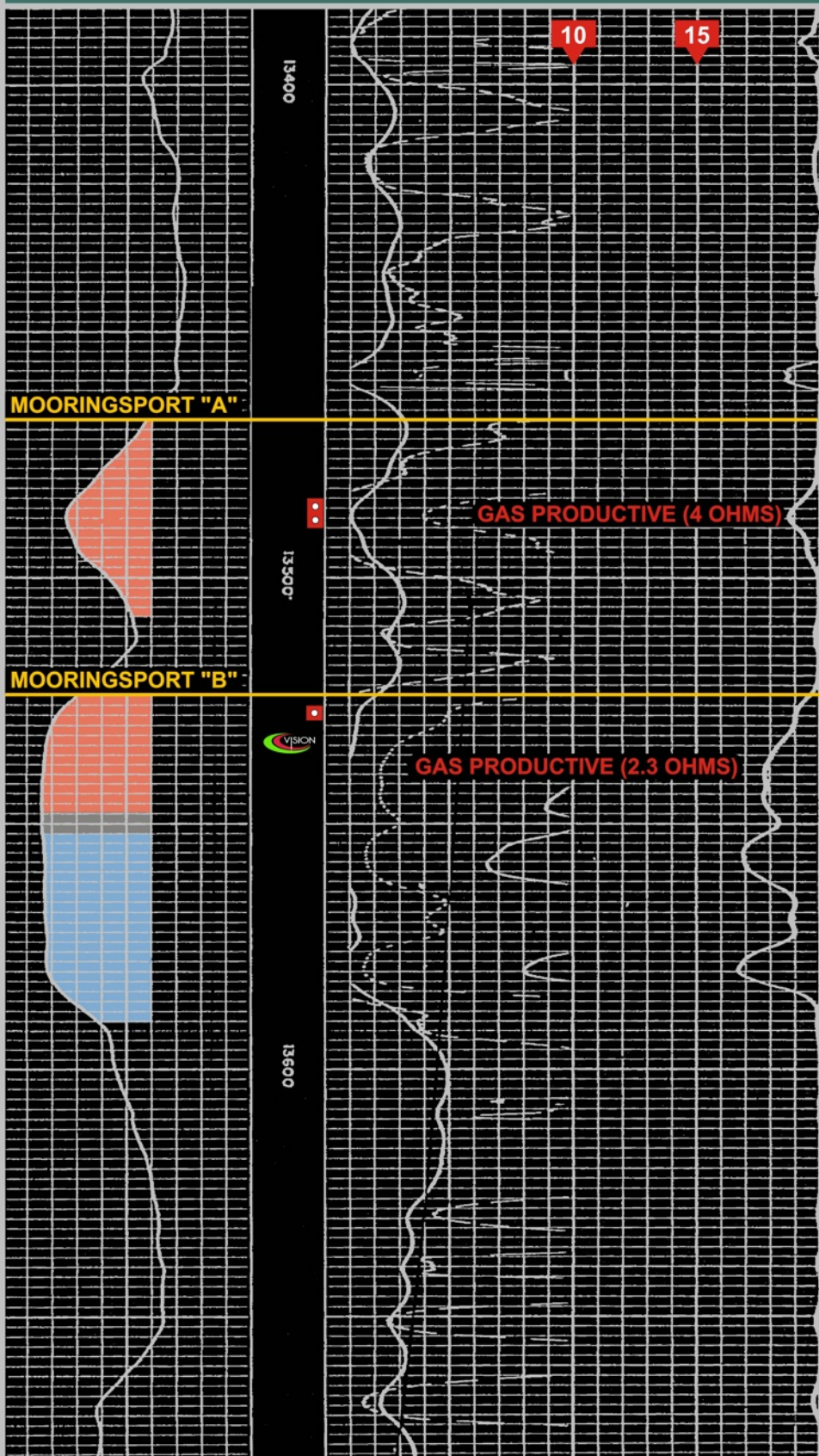


# Humble #1 Waveland GU DISCOVERY - WAVELAND FIELD

Section 22, T8S-R15W; Hancock County, Mississippi



Perf: 13,526'-13,529' (Mooringsport "B")  
FARO: 750 MCFGPD, 40 BCPD; Plugged Back  
Perf: 13,484'-13,490' (Mooringsport "A")  
IPF: 1476 MCFGPD, 30 BCPD, 26 BWPD  
FTP 1500 psi, 16/64" Ck, 46.6° Gr, GOR 49,200:1

**CUMULATIVE PRODUCTION:**  
6,221,292 MCF + 146,146 BC + 260,492 BW